

Sedi-REM matic

Sedimentation Device

KULLANIM KILAVUZU

INSTRUCTION MANUEL

BEDIENUNGSANLEITUNG

MODE D'EMPLOI

UPUTA ZA UPORABU

INSTRUCTIUNI DE FOLOSIRE

GEBRUIKSAANWIJZING



Picture - 1A

- 1- LCD screen
- 2- First Device
- 3- Second Device
- 4- Lap – Top
- 5- Printer
- 6- Easel

Properties of the device

Reference method, sensitive and right measurement

High technology

- the ability to see all the tests at the same time on the screen
- different calibration for each tube
- filing system of the patient information
- the ability to print former results of the patient
- the ability to connect with the hospital automation and LIS systems

High test capacity

- the ability to give the results of 1.000 patients at the same time and at once
- the storage of the results of 40 million patients with the patient filing system

Easy usage

- sepearte canals
- the possibility of the usage with or without barcode
- in the usage of barcode system , the empty canals where the user is going to put the tubes is seen on the barcode screen automatically
- warning of the user about the overflowing or a little amount of blood with the exhibition on the screen and the possibility of cancelling them from the computer screen if wanted
- the ability of making all the functions with just one button
- the possibility of multiple menu at printing stage
- AC 220-240 V / 50 Hz /
- In conditions of the damage of the 50-canalled device , the damaged device will be replaced with a new device within 72 hours.

GENERAL SECURITY INSTRUCTIONS

Before commissioning this device please read the instruction manual carefully.

The device is intended exclusively for the use of hospitals and health institutions.

Always remove the plug from the socket when attaching the 50-canalised device (picture 1A 2,3) with the lap-top and printer.

Make sure that the device is plugged before using it.

The USB connection cable between the device and the lap-top should never be unplugged .

Keep the device and the cable away from heat, direct sunlight, moisture, sharp edges and such like.

Do not use the device outdoors.

Make sure that the head pieces of the device is closed except for the times when the tubes are being put into the device.

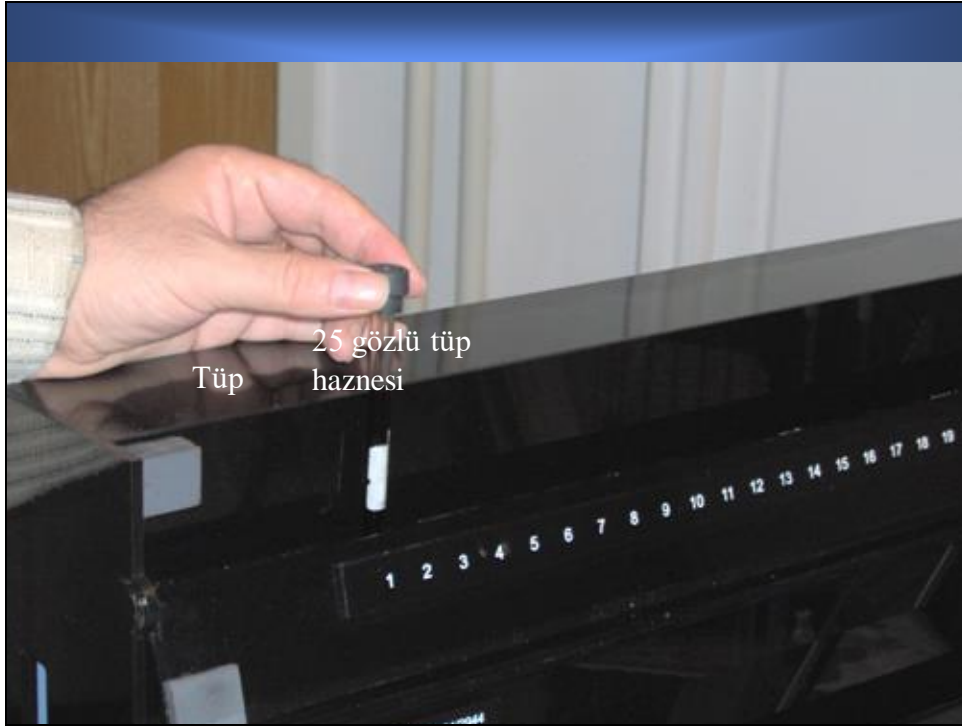
Make sure that no dust or water gets into the device.

Do not use the device with wet or moist hands.

Should the device become moist or wet, remove the mains plug from the socket immediately. Do not reach into the water.

WORK OF THE DEVICE

First the device is connected with the lap-top by USB cable. Then the device is plugged to a grounded power socket which has the properties of AC 230V – 50 Hz. Device is opened automatically when the lap-top is opened and the interface which is needed for the work of the device is seen on the screen.

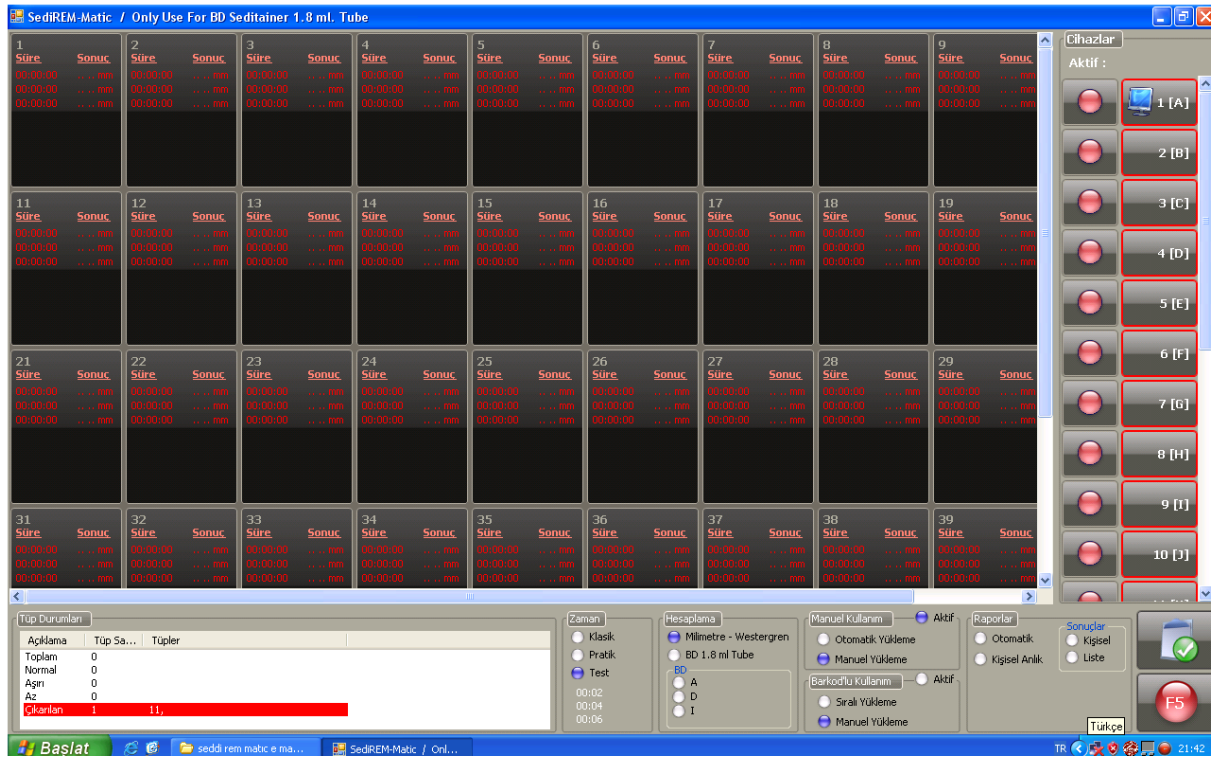


Picture – 1B

After the blood is taken from the patient, the tubes which are filled with that blood is placed in any of the tube canals on the device as it is seen in picture-1b. There are 50 tube canals on the device that consists of 25 on the top and 25 on the bottom.(picture-1c)

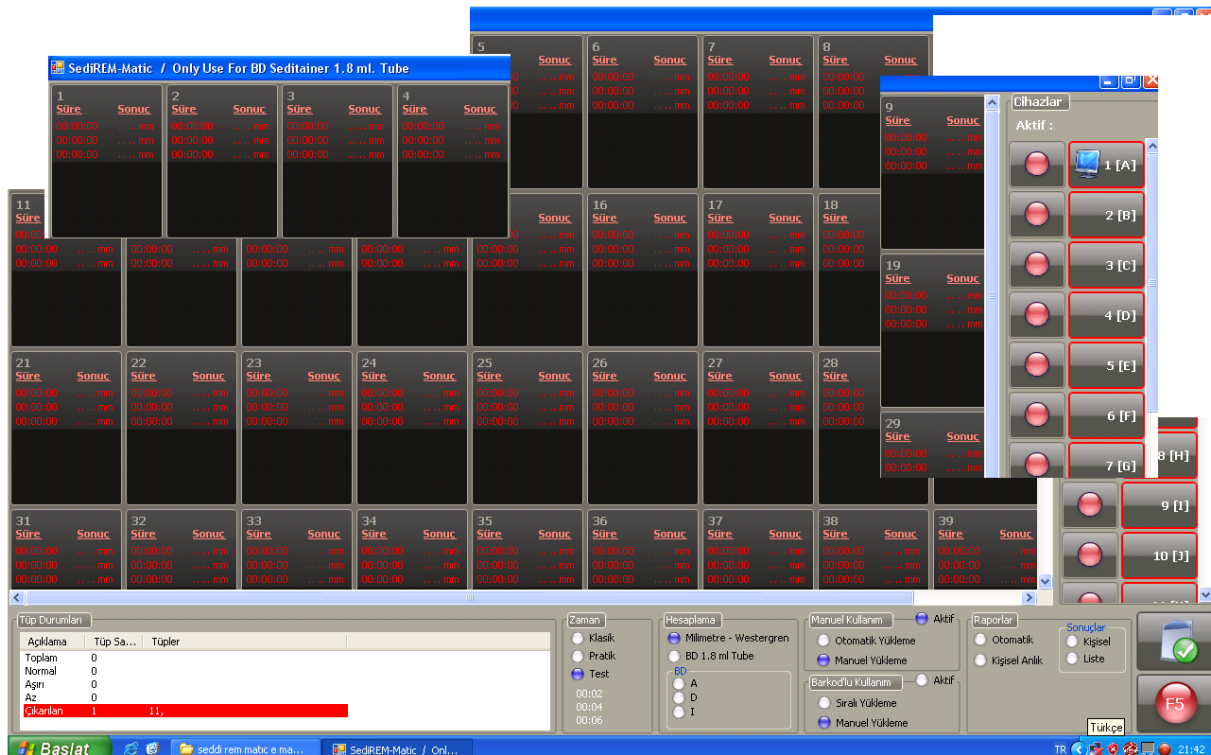


Picture – 1C



Picture -1

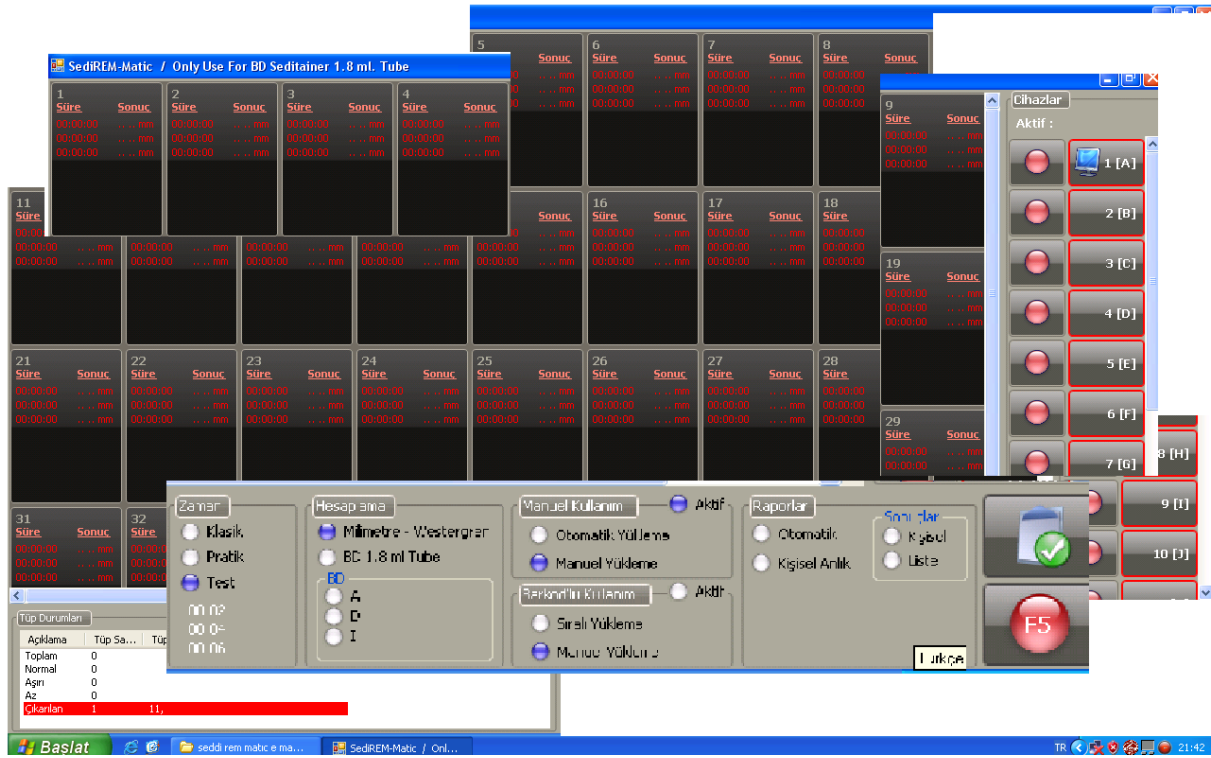
There are 50 tube canals on the device that consists of 25 on the top and 25 on the bottom.(picture-1c)



Picture -2

Sedi-REM MATIC - The Best "Sedimentation Unit" of the world

There is a panel below the interface. In this panel the first division shows tube conditions which includes the number of tubes inside the device; the number of tubes which has overflowing blood, a little amount of blood and normal amount of blood; and the canals in which these tubes are settled. As an example, in picture-5 it is seen that there are 3 tubes in the device and they are settled in 11th, 45th or 48th canals.



Picture -3

As it is seen in picture-3 next to the tube conditions division ; there are four divisions :

- 1- Time division
- 2- Calculation division
- 3- The usage of manual or barcode division
- 4- Reporting division

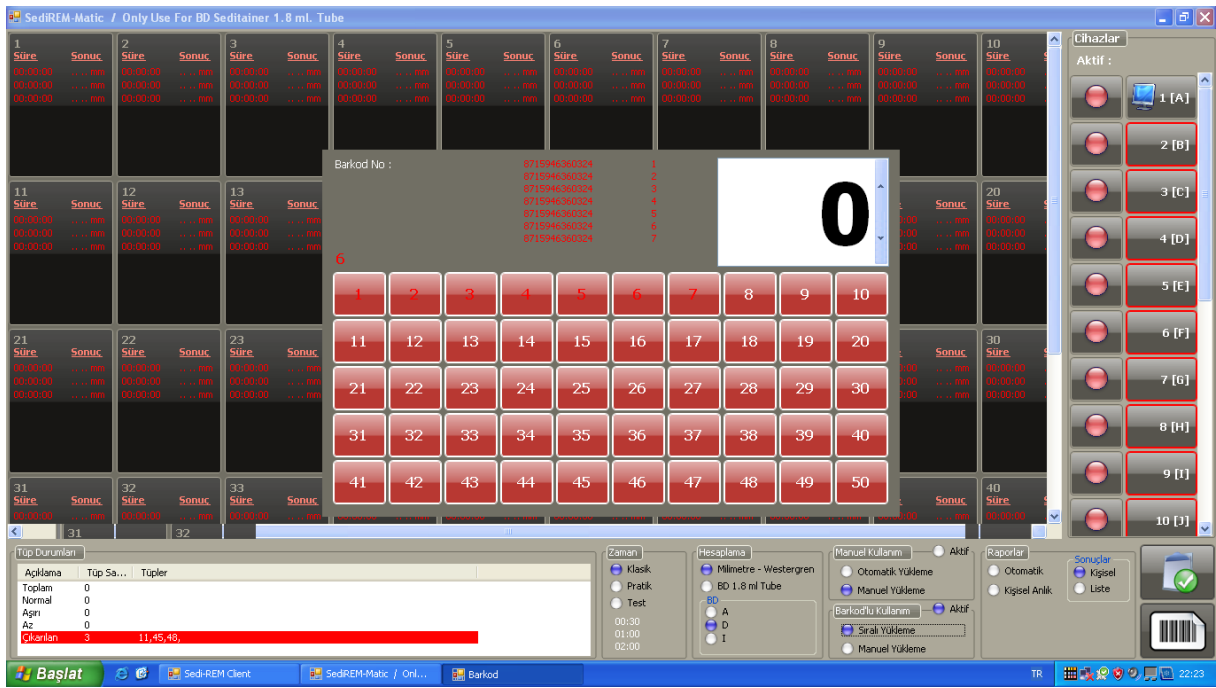
Time division :

If the user chooses the classical choice, the device gives the results of the 30th, 60th and 120th minutes as it is in the reference Westergren method.

If the user chooses the practical method the device gives the results of the 60th minute only.

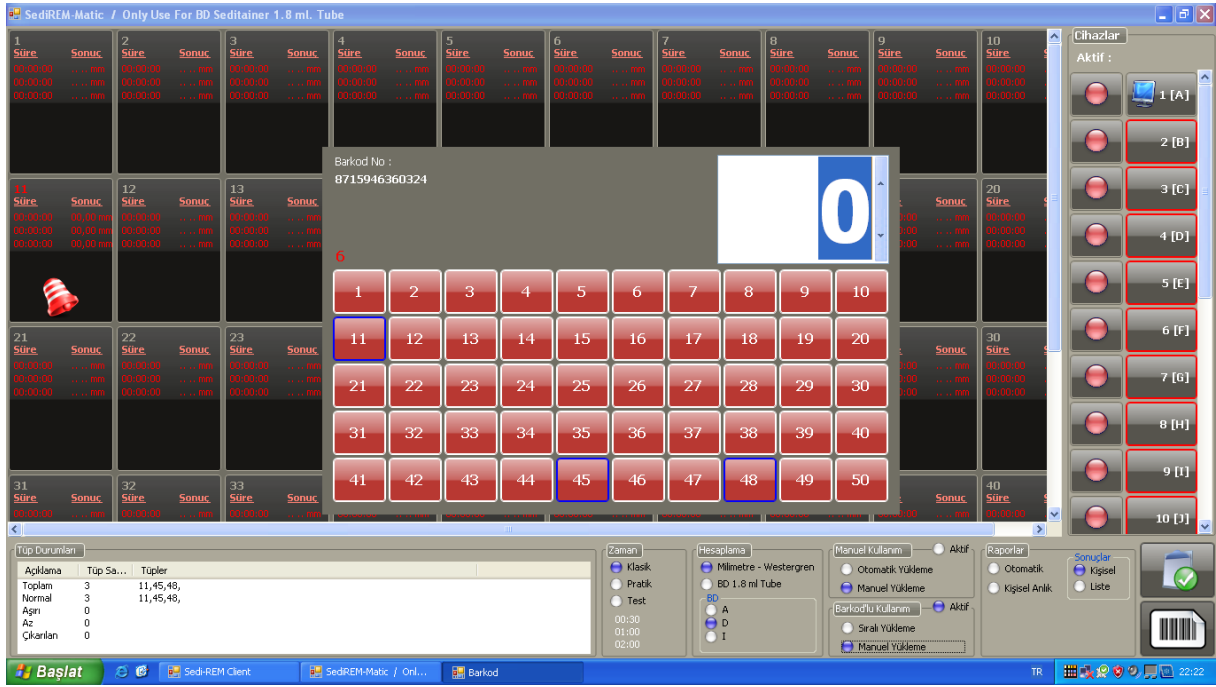
Sedi-REM MATIC - The Best "Sedimentation Unit" of the world

The usage of manual or barcode : If the user chooses the manual section, he or she has two ways of using it. In the manual automatic system the user only settles the tubes wherever he or she wants. There is nothing else to be done; the device begins to work automatically. In the double-manual system the user pushes the enter button after settling the tubes in the device.



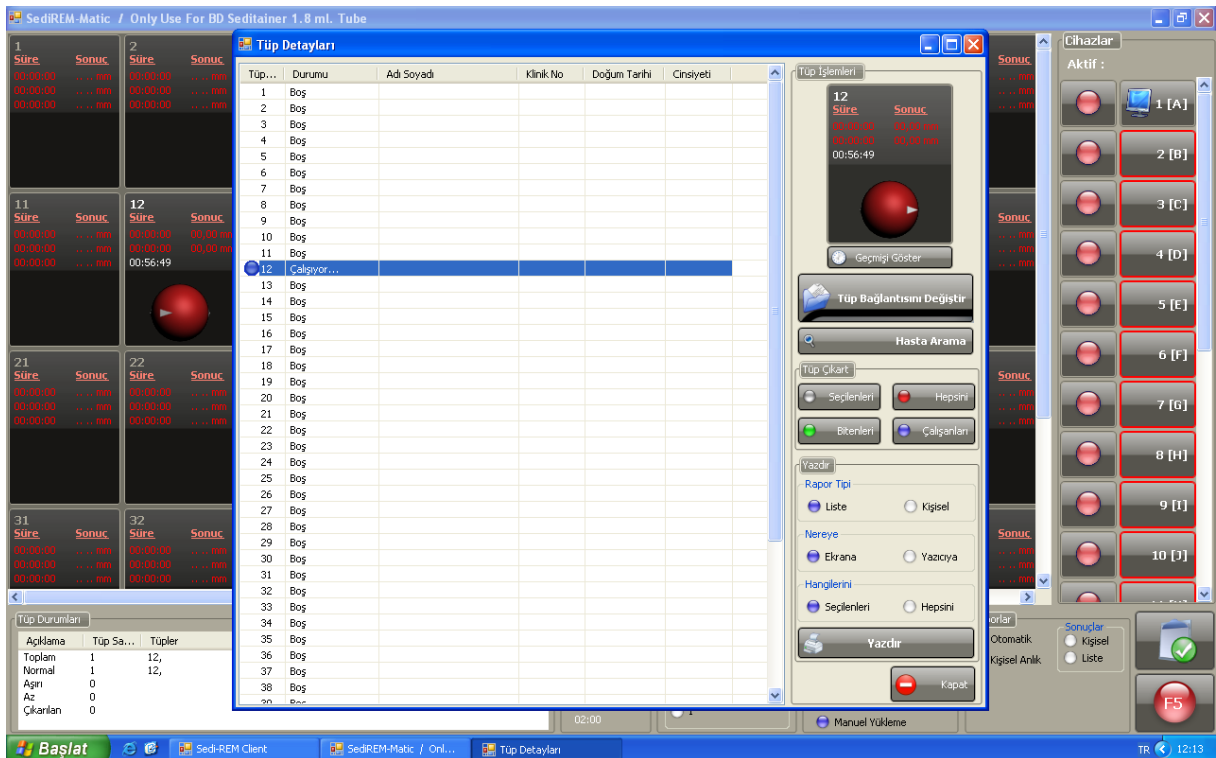
Picture -4

In the sequential usage with barcode, the user settles the tubes after scanning the barcodes on each of the tubes. Meanwhile, the canals in which the tubes are going to be settled are automatically shown on the screen as in picture-4.



Picture -5

In the manual usage with barcode the user chooses the canal in which he or she wants the tubes to be settled after scanning barcodes on each tube as it is seen in picture-5.

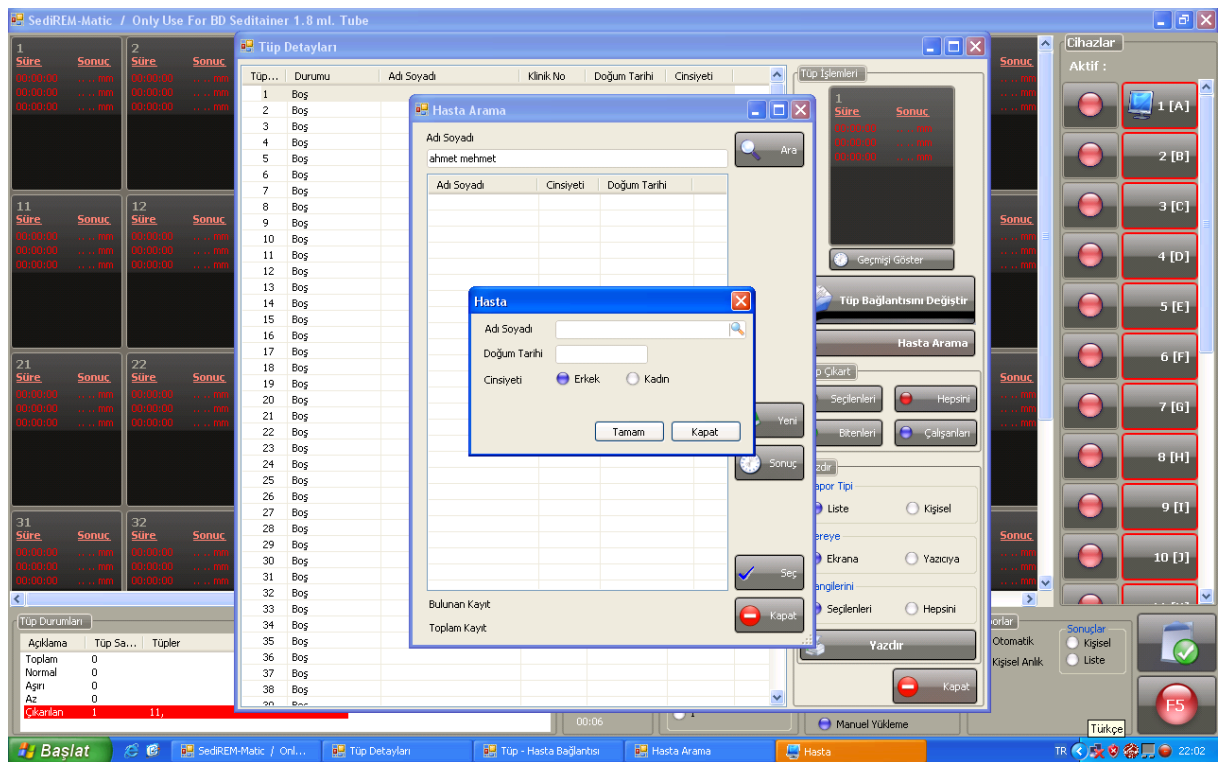


Picture -6

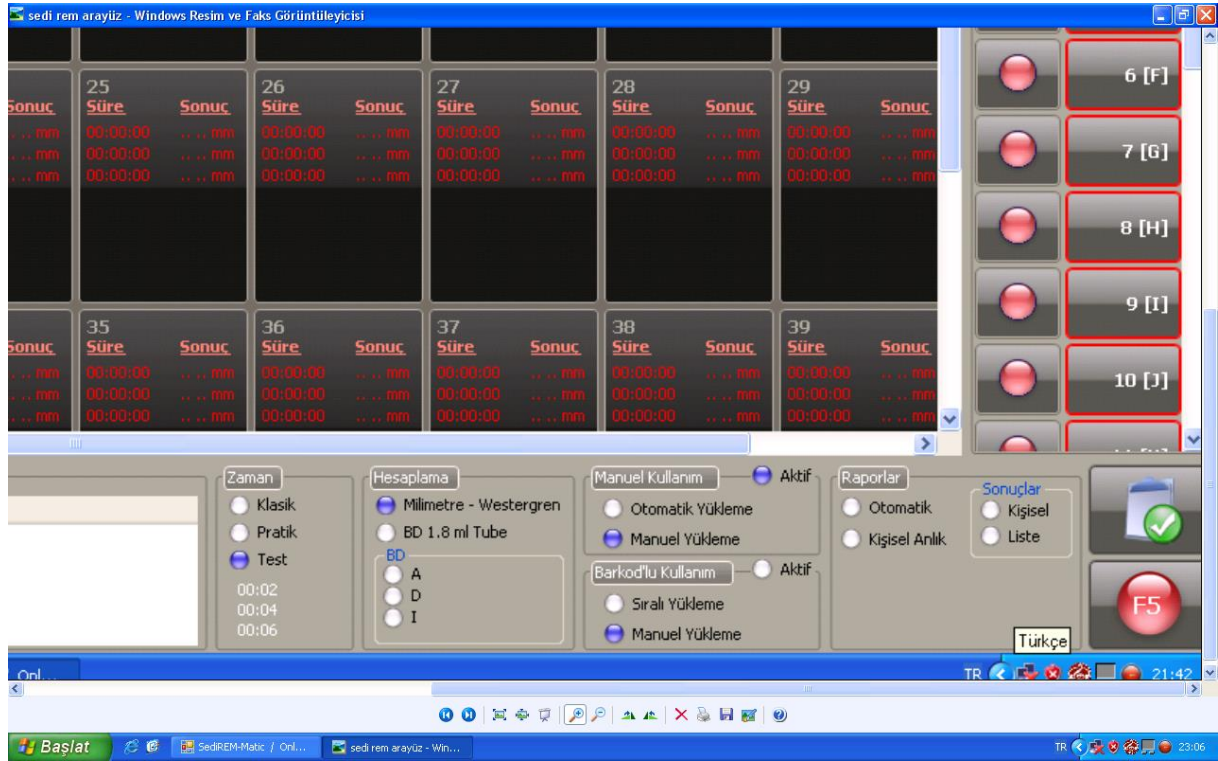
The user clicks on the little square on the right corner of the screen which has a tick in a green oval which is seen in picture-6. For example in the screen above it is seen that the

tube is settled in the 12th canal, the results of 30th and 60th minutes came and time is waited for the results of 120th minute to have run. As it is seen in this example there are no patient information next to the 12th canal which means that the tube is settled with manual usage.

As it is seen in picture-7 if it is clicked on the blue part with number 12, patient entry screen comes in front of the user where the user can enter the information of the patient manually. If this was the usage with barcode system, patient information would be entered automatically and that would be seen on the screen.



Picture -7



Picture -8

If the results are wanted to be printed, reports division at the right bottom of the screen is used. If the personal division is chosen when the automatic selection is made, the results of the device which is printed in A5 format include all informations of the patients and each patient has a paper which makes up 50 A5 papers.

If the automatic list division is chosen, the results of all 50 patients are printed in one paper.